



## Methodology: Research Design and Analysis of Data

As discussed in Chapter 1, the data used in this research book has been gathered from varying research projects relating to the preparation and implementation of ‘holistic’ Health and Physical Education and wellbeing. The predominantly qualitative data has been gathered from different regions of the world, namely Oceania, America, Europe, Asia, Africa and the Middle East. The purpose of the research was to identify ‘how’ the physical dimension can be implemented to best develop students’ wellbeing and ‘how’ wellbeing can be implemented to best develop students’ academic outcomes. Wellbeing is a complex, multi-dimensional construct that cannot be properly measured by a sole indicator in a single domain (Borgonovi & Pál, 2016). “Hence, in order to accurately monitor well-being, it is critical that its multi-dimensional nature is considered” (OECD, 2017). Researching ‘Physical Education and Wellbeing’ has involved various studies investigating various dimensions (cf. Chapters 13, 14, 15 and 16):

- a. Primary school case studies: qualitative in-depth data from three case study Australian primary schools of various sizes;
- b. Questionnaire: qualitative questionnaire for educationalists representing nine states of the United States of America;

- c. Initial Teacher Education case study: qualitative in-depth data from a recognised model (Ofsted outstanding) UK Initial Teacher Education (ITE) Physical Education programme;
- d. Teacher Preparation: qualitative case study carried out in an International school in the Middle East, investigating secondary trained PE teacher participants who are responsible for teaching primary school children;
- e. National survey: qualitative and quantitative data gathered from a large empirical ex-post-facto survey involving approximately 400 Australian primary [elementary] government school principals [headteachers];
- f. Primary school case study: qualitative in-depth data from a maintained government school of England, located in Asia; two-form entry (3–11 years; FS1—Year 6), approximately 350 students (90% Asian) and followed the National Curriculum of England;
- g. Primary school case study: qualitative in-depth data from a British School Overseas (BSO), located in Africa; 3–11 years; FS1—Year 6, had approximately 600 students (95% Egyptian) and followed the National Curriculum of England; and
- h. Primary and secondary school case study: qualitative in-depth data from a British curriculum school located in the Middle East with less than 400 students (100% Kingdom of Saudi Arabian) enrolled from Kindergarten (3 years) through to Grade 10 (16 years) and followed the National Curriculum of England.

## RESEARCH DESIGN

The qualitative research conducted was interpretivist and positioned within a constructionist paradigm. This theoretical framework is most apposite for the research studies (a, b, c, d, e, f, g & h), considering that understanding of the PE field, its clarity and success of policy implementation ultimately depends on teachers and students (Gardner & Williamson, 1999). The participants shared their experiences and perspectives within their context, which were never wrong. This is important as the implementation of curriculum, policies and PE terms adopted differ between nations and states.

The interpretive perspective assumes that there is change and that we live in an ever-changing world (Glesne, 1999). Emphasis is placed on the

change and development of individuals, groups and societies (Sarantakos, 1998). This is most suitable given the various discourses, ideologies and philosophies that have influenced the PE field over the years. With regards to the practitioner's perspective of H, W & PE, it was envisaged that there would be both positive and negative outcomes. This assumption is based on the personal experiences of the researcher, who in "qualitative research is often the primary instrument for data collection and analysis" (Merriam, 1998, p. 7).

### *Primary School Case Studies (Australia)*

A constructionist epistemology frames the research as meaning-making and was developed from engagement and interaction with the participants sharing their lived experiences and interpreting those experiences. The methodology chosen to construct meanings through capturing the context of each school was 'evaluative' and 'multiple' case study (Merriam, 1998). The purpose of the study was to explore the implementation of the Queensland HPE syllabus in three primary schools of varying enrolment sizes. The sites for the three case studies involved: one small-sized primary school (less than 200 students); one medium-sized primary school (200—400 students) and one large-sized primary school (over 400 students). The three case studies were selected as representative of their different demographics, pertaining to their size as measured by enrolment numbers, their geographic location and their socio-economic status. The study was a storytelling case study as it is a 'narrative and descriptive account of an educational event, program or system which deserves to be told to interested audiences, after careful analysis' (Bassey, 1999, p. 58).

The methods engaged so as to enable precision of details within the chosen theoretical framework were semi-structured and focus group interviews, reflective journal, observations, and document analysis (Table 12.1).

There were three focus group interviews within each school/case. One focus group with representatives from a class in the early years, one with representatives from a class in the middle years and one with representatives from a class in the upper years of the school. Maximum variation representation (Glaser & Strauss, 1967) involves "identifying and seeking out those who represent the widest possible range of the characteristics

**Table 12.1** Research framework for a) Primary school case studies (Australia)

<i>Epistemology</i>	<i>Constructionism</i>
Theoretical Perspective	Interpretivism
Research Methodology	Case Study
Data Generating Methods	Interviews; Semi-structured Interviews; Focus group Reflective Journal Observation Document Analysis

of interest for the study” (Merriam, 1998, p. 63). A maximum variation representation process was employed, by means of a questionnaire, to select four student representatives with a high-interest level in physical activities (two boys and two girls) and four student representatives with little interest in physical activities (two boys and two girls). The questionnaire results were checked for confirmation by the classroom teacher.

The overarching general research question that guided the conduct of this research is:

- How is the key learning area Health and Physical Education being taught?

Supplementary research questions that generated data include:

- How are teachers in the schools implementing the HPE curriculum documents?
- What readily accessible resources do schools have to assist with the implementation of Health and Physical Education?
- What are teachers’ perceptions with regard to the HPE Key Learning Area?
- What are children’s perceptions of the HPE Key Learning Area?

An analytical question arising from the research questions provides a more critical generation of data:

- What implementation strategies are required to optimise wellbeing?

Two ethical clearances were granted before this research was conducted. An ethical clearance was awarded from Australian Catholic University and from Brisbane Catholic Education (BCE). Permission was then granted by each of the case study school principals; each of the teacher participants within each case study school and consent from the parents of student participants. Credibility of the study was achieved by employing triangulation, the process of using multiple perceptions to clarify meaning (Stake, 1994). The multiple perceptions were obtained from observing and interviewing a variety of participants.

### *Questionnaire (USA)*

The purpose of this study was to investigate if issues raised in literature regarding uncertainty and confusion about associated PE terms in relation to HPE implementation, exists among practitioners. For this investigation, it was decided to conduct an interview in the medium of a questionnaire (Table 12.2). The research site was set within the US as this chosen nation provided a sample from which most could be learned (Merriam, 1998); it is a large and heavily populated country, separate states have authority for education curriculum policy and as the literature eludes there appears to be a number of terms used to represent the traditional nomenclature of ‘physical education’ (cf. Chapter 6). Interviewing is a popular method for collecting qualitative data (Merriam, 1998); “There are many variants of the standard face-to-face interview. Questionnaires are one, where the respondent is given written questions and asked to respond at his [or her] leisure” (Bassey, 1999, p. 82).

Hence, the most appropriate method for gathering data in this sample, considering the research question, was a questionnaire (Kumar, 2005). The informal interview structure of an open-ended question is regarded as flexible, exploratory and more like a conversation (Merriam, 1998), enabling a format where “individual respondents define the world in

**Table 12.2** Research framework for b) Questionnaire (USA)

<i>Epistemology</i>	<i>Constructionism</i>
Theoretical Perspective	Interpretivism
Research Methodology	Interview/Questionnaire
Data Generating Methods	Open-ended question

unique ways” (Merriam, 1998, p. 74). Participants were asked an open-ended question relating to PE nomenclatures, where the respondent recorded the answer in his/her words, expressing themselves freely (Kumar, 2005, p. 132).

Other benefits of asking an open-ended question were that participants answered the same question, thus increasing comparability of responses and reduced interviewer influence (Patton, 1990). Furthermore, this method was a favourable choice considering expense and time, and that the population was “scattered over a wide geographical area” (Kumar, 2005, p. 127). It is axiomatic that PE practitioners are articulate in written expression and are also very busy people.

A question relating to HPE implementation was posted on SHAPE (Society of Health and Physical Educators) America’s Exchange online network as a discussion topic. Exchange is a modern online platform used by SHAPE America members for sharing ideas and insights; discussion topics, discussions and resources. The question posed is:

Can we promote HPE as a strong combination or will it be at the expense of either Health or Physical Education?

Underlying implementation questions emerging from the literature and offering guidance during analysis include:

- What is the structure for PE/ HPE implementation?
- How do practitioners differentiate between PE terms?
- What discourses and ideologies exist in modern-day PE?

While no dates are disclosed, regions are acknowledged to illustrate population representation. All nine teachers who answered the question were selected as participants and represented a range of regions across the country; five elementary teachers, one middle school teacher, one secondary teacher and two university educationalists.

### *Initial Teacher Education Case Study (UK)*

This research investigated how an award-winning UK Primary School Physical Education specialist course/program (Ofsted Outstanding) prepared their Initial Teacher Education (ITE) students. The specific

course was awarded ‘Outstanding’ by the British Office for Standards in Education, Children’s Services and Skills (Ofsted).

Ofsted is the Office for Standards in Education, Children’s Services and Skills. We report directly to Parliament and we are independent and impartial. We inspect and regulate services which care for children and young people, and those providing education and skills for learners of all ages. From 2017 we will ensure that all of our work is evidence-led. (<http://www.ofsted.gov.uk/about-us>)

The case study university course was identified for having strong partnerships with local schools. Hence, it was the purpose of this study to investigate such course features (including partnerships as identified by Ofsted). The researcher in “qualitative research is often the primary instrument for data collection and analysis” (Merriam, 1998, p. 7), noting the differences between what was planned and what actually occurred (Anderson, 1990).

A successful program/course with established partnerships in England was deliberately chosen; and identified as an appropriate case study during online research when investigating Physical Education Teacher Education (PETE) courses that qualified graduates to be generalist primary school teachers with a specialism in physical education. The researcher, who was employed in an Australian University (in the Faculty of Education) with expertise in Health and Physical Education, was unable to find a similar primary course within Australia at the time. That is, a course specifically focussing on and specialising in primary education PETE did not exist in Australia (Lynch, 2013).

The methods engaged so as to enable precision of details within the chosen theoretical framework were semi-structured interviews, reflective journal, observations and document analysis (Table 12.3).

**Table 12.3** Research framework for c) Initial Teacher Education (ITE) case study (UK)

<i>Epistemology</i>	<i>Constructionism</i>
Theoretical Perspective	Interpretivism
Research Methodology	Case Study
Data Generating Methods	Interviews; Semi-structured
	Reflective Journal
	Observation
	Document Analysis

The researcher observed: open days for prospective students, which included course-specific information from the Course Manager; interviews for prospective students; discussed the course with present students; worked alongside course teacher educators (two lecturers and one technical assistant) and observed course lessons; consulted the two university lecturers involved in the PETE Primary course and conducted semi-structured interviews. Meetings and discussions were held with the Initial Teacher Education (ITE) Course Leader, and the International Coordinator for the Faculty of Education. Observations also included visiting local primary partner schools and having discussions with teachers.

An ethical clearance was granted from the Monash University Human Research Ethics Committee (MUHREC) where the researcher was employed. Also, permission from the UK University was granted for the recruitment of participants and research to be conducted.

### *Teacher Preparation for Primary H/PE (Qatar, Middle East)*

The purpose of this research was to investigate Secondary Education H/PE specialist teachers' preparation for teaching H/PE in primary school. The case study was an English international school catering for children from 3 to 18 years of age (primary and secondary school). The case study international school was identified for having teachers who gained their ITE qualifications from the UK and Australia.

This qualitative study school was located in Qatar, Middle East and specifically investigates:

- What are Secondary Education-trained H/PE specialist teachers' perceptions of teaching H/PE in the primary school?

The methods engaged so as to enable precision of details within the chosen theoretical framework were semi-structured interviews, reflective journal, and observations (Table 12.4).

All eight PE specialist teachers in the school were invited to participate and the six PE specialists who expressed interest were chosen. Observations were conducted to support the semi-structured interviews and were recorded as fieldnotes in a reflective journal.

An ethical clearance was granted from the Monash University Human Research Ethics Committee (MUHREC) where the researcher was



**Table 12.4** Research framework for d) Teacher Preparation (Qatar)

<i>Epistemology</i>	<i>Constructionism</i>
Theoretical Perspective	Interpretivism
Research Methodology	Case Study
Data Generating Methods	Interviews; Semi-structured Reflective Journal Observation

employed. Also, permission from the English International School was granted for the recruitment of participants and research to be conducted.

### *National Survey (Australia)*

This empirical research investigated school principal [headteacher] perceptions of how quality health and physical education in Government primary [elementary] schools is implemented. Data were gathered using ex-post facto surveys embedded within an interpretivist paradigm. The questionnaire formulated open-ended questions, providing principals [headteachers] with the opportunity to express themselves, and closed-ended questions, where they chose the category that best described their school. The aim of this project was to investigate how best to prepare Health and Physical Education (HPE) specialist teachers within primary schools to enhance students' wellbeing (Table 12.5).

This study sits within an interpretivist paradigm, as educational leadership and the role of the school principal [headteacher] is socially complex and constructed: "Social realities are constructed by the participants in their social settings" (Glesne, 1999). This theoretical framework enables the principal [headteacher] participants to share their stories on how HPE is taught and learned within the contexts

**Table 12.5** Research framework for e) National survey (Australia)

<i>Epistemology</i>	<i>Constructionism</i>
Theoretical Perspective	Interpretivism
Research Methodology	Questionnaire
Data Generating Methods	Ex-post facto survey (qualitative and quantitative questions)

of their schools, thus providing valuable insights into implementation. My Schools website (ACARA) <https://www.myschool.edu.au/>, the National Education Directory <https://www.education.net.au/> and the Australian Schools Directory <https://www.australianschoolsdirectory.com.au/> databases were used to access a large-scale sample of school and principal [headteacher] contact details. A large-scale sample of 376 principal participants from a cross-section of Australian Government schools were chosen as participants, representing every state and territory, region and size.

Through this interpretivist paradigm, meaning that already exists was explored (inductive research), therefore, the surveys were ex-post facto design (Cohen et al., 2007) adopting a mixed methods approach. The open-ended and closed-ended questions on the ex-post facto designed survey represented problems identified in the Worldwide Surveys of School PE (UNESCO, 2014), Senate Inquiry findings (Commonwealth of Australia, 1992) and literature (Lynch, 2005, 2007; Morgan & Bourke, 2005, 2008). These issues were related specifically to resources, time and teacher qualifications/training.

The first ethical clearance granted was from Monash University Human Research Ethics Committee (MUHREC). Following, an ethical clearance was granted from all Australian state and territory Government Departments of Education (Victoria, New South Wales, Queensland, Tasmania, Australian Capital Territory, South Australia, Western Australia and Northern Territory). It was clearly stated in the “Explanatory Letter” that completing the questionnaire was voluntary and principals were under no obligation to consent to participation.

### *Primary School Case Study (Brunei Darussalam, Asia)*

An interpretivist study was conducted within the constructionist paradigm. The participants shared their experiences and perspectives, which are never wrong. A constructionist epistemology frames the research as meaning-making and was developed from engagement and interaction with the participants sharing their lived experiences and interpreting those experiences. The methodology chosen to construct meanings through capturing the context was a case study (Merriam, 1998). The study was a storytelling case study as it is a ‘narrative and descriptive account of an educational event, program or system which deserves to be told to interested audiences, after careful analysis’ (Bassey,

**Table 12.6** Research framework for a) primary school case study (Brunei Darussalam)

<i>Epistemology</i>	<i>Constructionism</i>
Theoretical Perspective	Interpretivism
Research Methodology	Case Study
Data Generating Methods	Interviews; Semi-structured Interviews; Focus group
	Reflective Journal
	Observation
	Document Analysis

1999, p. 58). Specifically, the educational event was the recovery from a pandemic. The methods engaged so as to enable the precision of details within the chosen theoretical framework were semi-structured and focus group interviews, reflective journal, observations and document analysis (Table 12.6).

Semi-structured interviews were held with each of the KS2 teachers at the end of the third week in term one and later in the term (November 2020). There were two lots of eight interviews with KS2 teachers; 16 in total. The student participants were also chosen to be interviewed to seek their responses. Hence, at about the same time as the teacher's, focus group interviews were held with the KS2 students. There were four focus group interviews. One focus group with representatives from the two Year 3 classes, one with representatives from the two Year 4 classes, one with representatives from the two Year 5 classes and one with representatives from the two Year 6 classes. Maximum variation representation (Glaser & Strauss, 1967) involved 'identifying and seeking out those who represent the widest possible range of the characteristics of interest for the study' (Merriam, 1998, p. 63). A maximum variation representation process was employed, by means of the wellbeing questionnaire, to select two student representatives who indicated they had higher than average wellbeing (one boy and one girl) and two student representatives who indicated they had lower than average wellbeing (one boy and one girl). The questionnaire results were confirmed by each focus group's respective classroom teacher.

The researcher conducted observations of teaching and learning (informal drop-ins) to support teachers during the first six weeks of the year. In week 7 of term 1 (2020–2021), the researcher conducted formal drop-ins as part of a deep dive (Ofsted, 2019), involving informal lesson

observations, book scrutiny (document analysis) and pupil feedback analysis and was followed later with semi-structured interviews with teachers, allowing them to share deeper insights. The researcher conducted formal lesson observations (November 2020) where teachers evidenced how they addressed ‘challenge’ and Pupil Progress meetings were also held (March 2021).

The overarching general research question that guided the conduct of this research is:

- How do we improve children’s mathematics, reading and writing through the promotion of wellbeing?

Two ethical clearances were granted before this research was conducted. An ethical clearance was awarded from the school (Headteacher, School Governor’s Committee and Local Authority) and from the National Professional Qualification for Senior Leadership (NPQSL) tutor. The credibility of the study was achieved by employing triangulation, the process of using multiple perceptions to clarify meaning (Stake, 1994). The multiple perceptions were obtained from observing and interviewing a variety of participants.

### *Primary School Case Study (Egypt, Africa)*

An interpretivist study was conducted within the constructionist paradigm. The participants shared their experiences and perspectives, which are never wrong. A constructionist epistemology frames the research as meaning-making and was developed from engagement and interaction with the participants sharing their lived experiences and interpreting those experiences. The methodology chosen to construct meanings through capturing the context was a case study (Merriam, 1998). The study was a storytelling case study as it is a ‘narrative and descriptive account of an educational event, program or system which deserves to be told to interested audiences, after careful analysis’ (Bassey, 1999, p. 58). Specifically, the educational event was the recovery from a pandemic. The methods engaged so as to enable the precision of details within the chosen theoretical framework were semi-structured and focus group interviews, reflective journal, observations and document analysis (Table 12.7).

**Table 12.7** Research framework for a) primary school case study (Egypt)

<i>Epistemology</i>	<i>Constructionism</i>
Theoretical Perspective	Interpretivism
Research Methodology	Case Study
Data Generating Methods	Interviews; Semi-structured Interviews; Focus group Reflective Journal Observation Document Analysis

Semi-structured interviews were held with each of the Foundation Stage, KS1 and KS2 teachers during term one and later in the academic year. These were interviews with teachers as a formal check-in meeting and later also for pupil progress meetings. At about the same time as the teacher's, focus group interviews were held with the children (pupil voice). There were focus group interviews across classes, Years 1–6. One focus group with representatives from each year level. Maximum variation representation (Glaser & Strauss, 1967) involved 'identifying and seeking out those who represent the widest possible range of the characteristics of interest for the study' (Merriam, 1998, p. 63). A maximum variation representation process was employed, by means of the Pupil Attitudes to Self and School (PASS) wellbeing questionnaire conducted mid-way during term one, to select two student representatives who indicated they had higher than average wellbeing (one boy and one girl) and two student representatives who indicated they had lower than average wellbeing (one boy and one girl).

The researcher conducted observations of teaching and learning (informal drop-ins) to support teachers during the first term of the year. Also, during terms two and three of the academic year, the researcher conducted formal drop-ins as part of a deep-dive (Ofsted, 2019). This involved initial informal lesson observations, learning environment observations, book scrutiny, online communication with parents—Class Dojo (document analysis) and pupil feedback analysis (observations and document analysis). Also, document analysis was used when analysing the last four years of results for Pupil Attitudes to Self and School (PASS) wellbeing surveys, and the last five years of Year 6 GL Assessment results; Progress Test English (PTE) and Progress Test Maths (PTM).

All observations and document analysis were followed with semi-structured interviews with teachers where feedback and professional

discussions were conducted, allowing teachers to share deeper insights. The researcher also conducted formal lesson observations, followed by semi-structured interviews during term two, where teachers were required to evidence how they addressed ‘challenge’. Pupil Progress meetings were also held during term 2 and term 3.

The overarching general research question that guided the conduct of this research is:

- How do we improve children’s mathematics, reading and writing through the promotion of wellbeing?

An ethical clearance was granted before this research was conducted. An ethical clearance was awarded from the school Principal and Primary Headteacher. The credibility of the study was achieved by employing triangulation, the process of using multiple perceptions to clarify meaning (Stake, 1994). The multiple perceptions were obtained from observing and interviewing a variety of participants.

### *Primary and Secondary School Case Study (Kingdom of Saudi Arabia, Middle East)*

An interpretivist study was conducted within the constructionist paradigm. The participants shared their experiences and perspectives, which are never wrong. A constructionist epistemology frames the research as meaning-making and was developed from engagement and interaction with the participants sharing their lived experiences and interpreting those experiences. The methodology chosen to construct meanings through capturing the context was a case study (Merriam, 1998). The study was a storytelling case study as it is a ‘narrative and descriptive account of an educational event, program or system which deserves to be told to interested audiences, after careful analysis’ (Bassey, 1999, p. 58). The methods engaged to enable the precision of details within the chosen theoretical framework were semi-structured and focus group interviews, reflective journal, observations and document analysis (Table 12.8).

Semi-structured interviews were held with the school Director, the school Principal, two Vice Principals, Wellbeing Lead, Assistant Principal, school Board Member, three KSA Cultural Committee Members, two

**Table 12.8** Research framework for a) primary and secondary school case study (KSA)

<i>Epistemology</i>	<i>Constructionism</i>
Theoretical Perspective	Interpretivism
Research Methodology	Case Study
Data Generating Methods	Interviews; Semi-structured Interviews; Focus group Reflective Journal Observation Document Analysis

classroom teachers, three staff administrative members and two education consulting agency participants representing the school. Focus group interviews were held with Grade 10 students and Grade 6 students.

Document analysis occurred across the schools' policies, curriculum planning, philosophy, vision, mission and High Performance Learning (HPL) program adopted. Observations were held during a visit to the school. This involved a tour of the school's facilities and classrooms and observations of lessons, including physical education lessons across the primary and secondary schools, and daily routines.

The overarching general research question that guided the conduct of this research is:

- How can programs be effectively implemented to improve students' wellbeing?

An ethical clearance was granted before this research was conducted from the school Principal. The credibility of the study was achieved by employing triangulation, the process of using multiple perceptions to clarify meaning (Stake, 1994). The multiple perceptions were obtained from observing and interviewing a variety of participants.

## DATA ANALYSIS

An interpretivist data analysis strategy employed for the purpose of these research studies was narrative/descriptive analysis. Each case study and questionnaire investigates a different context and a different story, and this analysis strategy enables emphasis to be placed on the communication of these stories (Merriam, 1998). The interpretivist is committed

to hearing the stories of the participants, and their perspectives of the world they experience (Taylor & Bogdan, 1998). The researcher attempts to capture the stories by interpreting the culture of the school through reported experiences, understandings and other collected data, resulting in a learning episode for both reader and researcher (Glesne, 1999). The narrative/ descriptive analysis method has been deliberately chosen to illuminate each story/ case study in this interpretive study and to identify 'how' the physical dimension and values can be managed to best develop students' wellbeing.

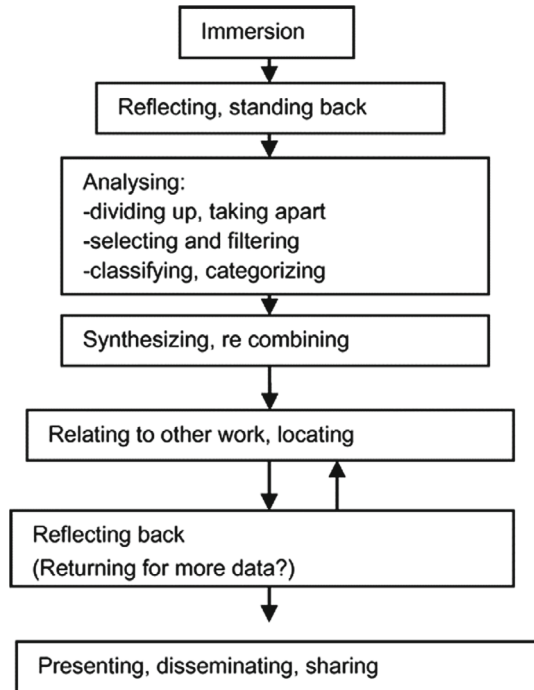
The combined research projects employ multiple case studies (and questionnaires), hence it is necessary to collect and analyse data from more than one school/school region (Merriam, 1998). The analysis process involves employing a narrative/descriptive report for each of the case study contexts (and questionnaire regions). During Stage One (Table 12.9), each interview, observation and journal entry (for each of the case studies) and questionnaires for each survey region were analysed using Wellington's six-stage simplified version of the 'Constant Comparative Method for Analysing Qualitative Data' (Wellington, 2000) (Fig. 12.1). This was followed by Stage Two (Table 12.9), where each individual case (and survey region) was described in a report. The constant comparative method of analysing qualitative data combines inductive category coding with a simultaneous comparison of all units of meaning obtained (Glaser & Strauss, 1967). As each new unit of meaning is selected for analysis, it is compared to all existing units and subsequently categorised and coded with similar units. If there are no similar units of meaning, a new category is formed (Maykut & Morehouse, 1994).

**Table 12.9** Process of data analysis

<i>Stage 1</i>	<i>Analysis of data for each case study/ survey region using Wellington's table of analysis</i>
Stage 2	Narrative/Descriptive report given as an analysis for each case study/ survey region
Stage 3	Cross-case analysis again using Wellington's table of analysis. This time analysing whole stories or story sections (surveys were analysed according to school size)
Stage 4	Narrative/Descriptive report given for cross-case study/ survey state region analysis



**Fig. 12.1** General stages in making sense of qualitative data (Wellington, 2000, p. 141)



Stage Three (Table 12.9): the cross-case analysis began at the completion of an analysis report for each case/ survey region (Stage Two, Table 12.9). “A qualitative, inductive, multicase study seeks to build abstractions across cases” (Merriam, 1998, p. 195). Repeating the same analysis process, Wellington’s six stages were used to analyse the data across the case studies (surveys were analysed according to school size) which was again reported in Stage Four (Table 12.9) using a narrative/ descriptive report.

The analysis is therefore iterative (Dey, 1993) and during cross-case and regional analysis, the researcher attempts through iteration to see processes that are common among the case studies/survey regions. Relating to the similarities in context can develop more sophisticated descriptions and more powerful explanations (Miles & Huberman, 1994).

During the analysis process, key themes were generated by employing a coding system. Table 12.10 illustrates a copy of a participant's coded transcript. In an attempt to answer the research questions, units of meaning were formed, coded and categorised with other similar units. This process occurred within each case study school/survey region and across case studies/survey regions. A detailed description of findings from the analysis process is provided in 'findings and discussion' (cf. Chapters 13, 14, 15 and 16).

Confidentiality and anonymity were assured during the study as pseudonyms were assigned to protect the privacy of the participants. A conscious effort was made by the researcher to be fair in the generation of data, in the interpretation of data, in the formulation of theories and in the presentation of data. Member checks involved soliciting informants' views as to credibility of findings and these were utilised to confirm the plausibility and credibility of interpretations. Themes and conclusions were checked within the other data-generating methods, for example, a finding during an observation was further explored during an interview. This addresses the issue of public disclosure of processes and gives the themes congruence and verisimilitude (Anfara et al., 2002).

## REFLECTION

This chapter identifies the varying research projects relating to Health, PE and Wellbeing from around the globe. The qualitative research, within the interpretivist paradigm, was deliberately chosen to gather data about participants' experiences and perspectives within their context. What research is conducted within your context? What is the purpose of the research? Who is involved and how is the data gathered? How are the participants' experiences and perspectives within their context prioritised?

**Table 12.10** Coding of Interview Transcript

<i>Interview transcript</i>	<i>Coding</i>
I What do you like about the Health and PE syllabus?	-Teacher familiarity with syllabus
P Because I haven't had that much experience with it I don't know it that well so it's hard to say what I like and what I don't like—what I have seen of it I like the way that it's set out because it's fairly easy to follow, easy to read and I just like the way it's set out and structured	-Teacher confidence and knowledge -Syllabus likes & dislikes -HPE specialist
I How does the school manage to fit the demands of the Health and PE syllabus that is the three strands, into the crowded curriculum?	-Time afforded to strands -Teachers responsible for strands
P We are fairly lucky here because we have an HPE Specialist who comes in and takes that strand of things for 40 minutes a week	-Integration with other KLAS -Methods of implementation
I So physical activities?	-HPE Connections with Religious Education
P Physical activities, yep. In terms of Health and Personal Development, that's left up to the classroom teacher to do in your own planning. Personal Development is, we have included that into some of our units that we have done previously particularly with RE and with some of our SOSE, but with the Health and any other Personal Development you do, it's basically what you can implement into your everyday planning. Whether you do that with your buddy teacher or not, or whether you do that with your own class	-Integration with other KLAS
I Do you integrate or connect the curriculum with the Health and Personal Development to fit that in?	
P We try to do it—I guess it's happened more with Personal Development than what has happened with Health. Just that Personal Development does seem to fit in well with some of the RE outcomes. Yes it would be good to integrate it but it's hard	

## REFERENCES

- Anderson, G. (1990). *Fundamentals of educational research*. The Falmer Press.
- Anfara, V. A., Jnr., Brown, K. M., & Mangione, T. L. (2002). Qualitative analysis on stage: Making the research process more public. *Educational Researcher*, 31(7), 28–38.
- Bassey, M. (1999). *Case study research in educational settings*. Open University Press.

- Borgonovi, F., & J. Pál (2016). A framework for the analysis of student well-being in the PISA 2015 study. OECD Education Working Papers, No. 140. OECD Publishing. <https://doi.org/10.1787/5jlpszwghvnb-en>
- Cohen, L., Manion, L., & Morrison, K. (2007). *Research methods in education* (6th ed.). Routledge.
- Commonwealth of Australia. (1992). *Physical and sport education—A report by the senate standing committee on environment, recreation and the arts*. Senate Printing Unit.
- Dey, I. (1993). *Qualitative data analysis*. Routledge.
- Gardner, C., & Williamson, J. (1999, November 29–December 2). *There's many a slip 'tween cup and lip...: A case study of educational policy implementation in a changing context*. Paper presented at Australian Association for Research in Education Conference, Melbourne, Australia.
- Glaser, B. G., & Strauss, A. L. (1967). *The discovery of grounded theory*. Aldine.
- Glesne, C. (1999). *Becoming qualitative researchers: An introduction*. Addison Wesley Longman.
- Kumar, R. (2005). *Research methodology* (2nd ed.). Pearson Education.
- Lynch, T. (2005). *An evaluation of school responses to the introduction of the Queensland 1999 health and physical education (HPE) syllabus and policy developments in three Brisbane Catholic primary schools* (Unpublished doctoral thesis), Australian Catholic University, Australia.
- Lynch, T. (2007). What has changed since the 1992 senate inquiry into physical and sport education? An evaluation of school responses within three Brisbane Catholic Education (BCE) primary schools. *Australian Council for Health and Physical Education and Recreation (ACHPER) Healthy Lifestyles Journal*, 54, 16–23.
- Lynch, T. (2013). Health and Physical Education (HPE) teachers in primary schools: Supplementing the debate. Australian Council for Health, Physical Education and Recreation (ACHPER) Active and Healthy Magazine, 20 (3/4), 10–12. <http://www.achper.org.au/blog/blog-hpe-teachers-in-primary-schoolssupplementing-the-debate>, <https://doi.org/10.13140/2.1.2889.6644>.
- Maykut, P., & Morehouse, R. (1994). *Beginning qualitative research: A philosophical and practical guide*. The Falmer Press.
- Merriam, S. (1998). *Qualitative research and case study applications in education: Revised and expanded from case study research in education*. Jossey-Bass.
- Miles, M. B., & Huberman, A. M. (1994). *Qualitative data analysis: An expanded sourcebook* (2nd ed.). Sage.
- Morgan, P., & Bourke, S. (2005). An investigation of pre-service and primary school teachers' perspectives of PE teaching confidence and PE teacher education. *ACHPER Healthy Lifestyles Journal*, 52(1), 7–13.

- Morgan, P., & Bourke, S. (2008). Non-specialist teachers' confidence to teach PE: The nature and influence of personal school experiences in PE. *Physical Education and Sport Pedagogy*, 13(1), 1–29. <https://doi.org/10.1080/17408980701345550>
- Stake, E. (1994). *Handbook of qualitative research*. Sage.
- Taylor, S., & Bogdan, R. (1998). *Introduction to qualitative research methods: A guide and resource*. John Wiley and Sons.
- OECD. (2017). *PISA 2015 results (volume III): Students' well-being*, PISA. OECD Publishing. <https://doi.org/10.1787/9789264273856-en>
- Ofsted. (2019). Inspecting the Curriculum: Revising Inspection Methodology to Support the Education Inspection Framework. [https://assets.publishing.service.gov.uk/government/uploads/system/uploads/attachment\\_data/file/814685/Inspecting\\_the\\_curriculum.pdf](https://assets.publishing.service.gov.uk/government/uploads/system/uploads/attachment_data/file/814685/Inspecting_the_curriculum.pdf).
- Patton, M. Q. (1990). *Qualitative evaluation and research methods*. Sage.
- Sarantakos, S. (1998). *Social research*. Macmillan Education Australia.
- United Nations Educational, Scientific and Cultural Organization. (2014). *World-wide survey of school physical education*. <https://unesdoc.unesco.org/images/0022/002293/229335e.pdf>
- Wellington, J. (2000). *Educational research: Contemporary issues and practical approaches*. Continuum.